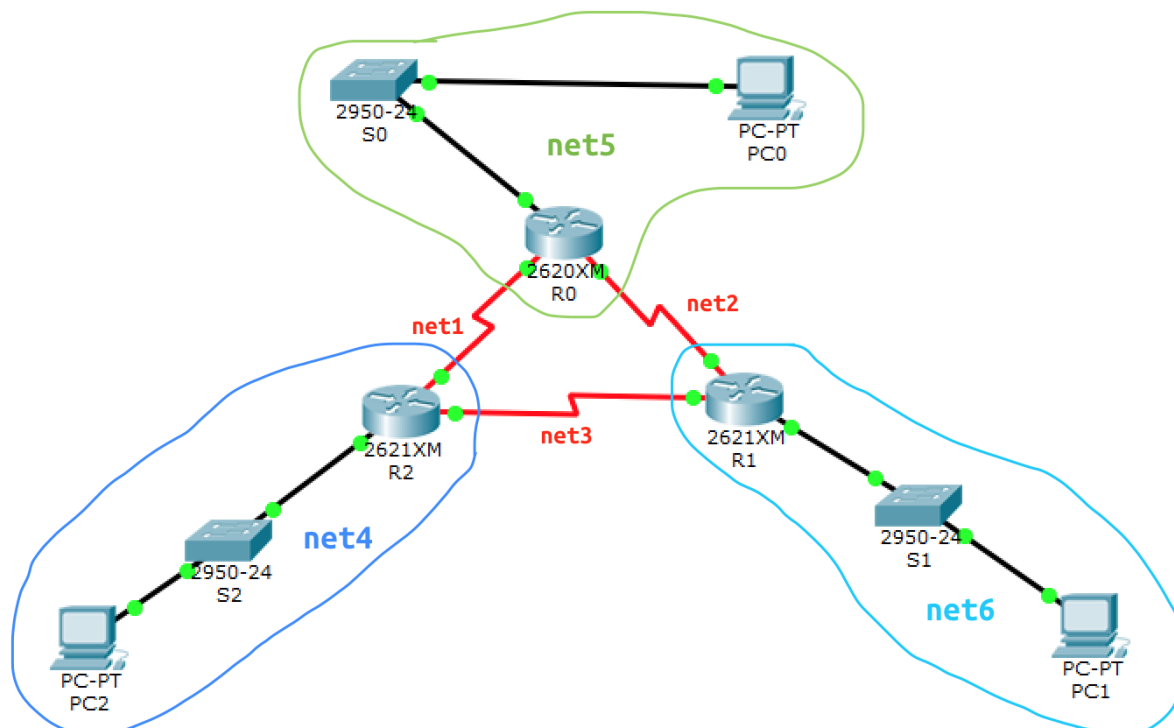


lab7

- Пажитных Иван Павлович
- 3 курс, 1 группа, МСС
- [github lab link](#)



task1 - routers and switches names

```
Router>enable
Router#config t
Router(config)#hostname R1
```

```
Switch>enable
Switch#config t
Switch(config)#hostname S0
```

do same with R2 , R3 , S1 , S2 , S3

task2 - ip configs

- PC0 in net5

```
Link-local IPv6 Address.....: FE80::202:17FF:FEB8:6208
IP Address.....: 175.123.5.1
Subnet Mask.....: 255.255.255.0
Default Gateway.....: 175.123.5.2
```

- PC1 in net6

```
Link-local IPv6 Address.....: FE80::204:9AFF:FE68:5CD5
IP Address.....: 175.123.6.1
Subnet Mask.....: 255.255.255.0
Default Gateway.....: 175.123.6.2
```

- PC2 in net4

```
Link-local IPv6 Address.....: FE80::201:43FF:FE63:99CB
IP Address.....: 175.123.4.1
Subnet Mask.....: 255.255.255.0
Default Gateway.....: 175.123.4.2
```

- R0 in net5

```
R0(config)#interface FastEthernet0/0
R0(config-if)#ip address 175.123.5.2 255.255.255.0
```

- R0 in net1

```
R0(config)#interface Serial0/2
R0(config-if)#ip address 175.123.1.2 255.255.255.0
```

- R0 in net2

```
R0(config)#interface Serial0/0
R0(config-if)#ip address 175.123.2.1 255.255.255.0
```

- R1 in net6

```
R1(config)#interface FastEthernet0/0
R1(config-if)#ip address 175.123.6.2 255.255.255.0
```

- R1 in net2

```
R1(config)#interface Serial0/2
R1(config-if)#ip address 175.123.2.2 255.255.255.0
```

- R1 in net3

```
R1(config)#interface Serial0/0
R1(config-if)#ip address 175.123.3.1 255.255.255.0
```

- R2 in net4

```
R2(config)#interface FastEthernet0/0
R2(config-if)#ip address 175.123.4.2 255.255.255.0
```

- R2 in net1

```
R2(config)#interface Serial0/2
R2(config-if)#ip address 175.123.1.1 255.255.255.0
```

- R2 in net3

```
R2(config)#interface Serial0/0
R2(config-if)#ip address 175.123.3.2 255.255.255.0
```

task3 - *RIP* v2 config

- R0

```
R0 (config)#router rip
R0 (config-router)#version 2
R0 (config-router)#network 175.123.5.0
R0 (config-router)#network 175.123.1.0
R0 (config-router)#network 175.123.2.0
```

- R1

```
R1 (config)#router rip
R1 (config-router)#version 2
R1 (config-router)#network 175.123.6.0
R1 (config-router)#network 175.123.2.0
R1 (config-router)#network 175.123.3.0
```

- R2

```
R2 (config)#router rip
R2 (config-router)#version 2
R2 (config-router)#network 175.123.4.0
R2 (config-router)#network 175.123.1.0
R2 (config-router)#network 175.123.3.0
```

task4 - check protocols and routes

R0

- `show ip protocols`:

Maximum path: 4

Routing for Networks:

175.123.0.0

Passive Interface(s):

FastEthernet0/0

Routing Information Sources:

| Gateway | Distance | Last Update |
|-------------|----------|-------------|
| 175.123.2.2 | 120 | 00:00:05 |
| 175.123.1.1 | 120 | 00:00:07 |

Distance: (default is 120)

- `show ip route`:

175.123.0.0/24 is subnetted, 6 subnets

C 175.123.1.0 is directly connected, Serial0/2

C 175.123.2.0 is directly connected, Serial0/0

R 175.123.3.0 [120/1] via 175.123.2.2, 00:00:19, Serial0/0
[120/1] via 175.123.1.1, 00:00:20, Serial0/2

R 175.123.4.0 [120/1] via 175.123.1.1, 00:00:20, Serial0/2

C 175.123.5.0 is directly connected, FastEthernet0/0

R 175.123.6.0 [120/1] via 175.123.2.2, 00:00:19, Serial0/0

R1

- `show ip protocols`:

Maximum path: 4

Routing for Networks:

175.123.0.0

Passive Interface(s):

FastEthernet0/0

Routing Information Sources:

| Gateway | Distance | Last Update |
|-------------|----------|-------------|
| 175.123.2.1 | 120 | 00:00:06 |
| 175.123.3.2 | 120 | 00:00:25 |

Distance: (default is 120)

- `show ip route`:

175.123.0.0/24 is subnetted, 6 subnets

```
R      175.123.1.0 [120/1] via 175.123.2.1, 00:00:24, Serial0/2
      [120/1] via 175.123.3.2, 00:00:13, Serial0/0
C      175.123.2.0 is directly connected, Serial0/2
C      175.123.3.0 is directly connected, Serial0/0
R      175.123.4.0 [120/1] via 175.123.3.2, 00:00:13, Serial0/0
R      175.123.5.0 [120/1] via 175.123.2.1, 00:00:24, Serial0/2
C      175.123.6.0 is directly connected, FastEthernet0/0
```

R2

- `show ip protocols`:

```
Maximum path: 4
```

```
Routing for Networks:
```

```
175.123.0.0
```

```
Passive Interface(s):
```

```
FastEthernet0/0
```

```
Routing Information Sources:
```

| Gateway | Distance | Last Update |
|---------|----------|-------------|
|---------|----------|-------------|

| | | |
|-------------|-----|----------|
| 175.123.3.1 | 120 | 00:00:12 |
|-------------|-----|----------|

| | | |
|-------------|-----|----------|
| 175.123.1.2 | 120 | 00:00:16 |
|-------------|-----|----------|

```
Distance: (default is 120)
```

- `show ip route`:

```
175.123.0.0/24 is subnetted, 6 subnets
```

```
C    175.123.1.0 is directly connected, Serial0/2
```

```
R    175.123.2.0 [120/1] via 175.123.3.1, 00:00:01, Serial0/0  
      [120/1] via 175.123.1.2, 00:00:08, Serial0/2
```

```
C    175.123.3.0 is directly connected, Serial0/0
```

```
C    175.123.4.0 is directly connected, FastEthernet0/0
```

```
R    175.123.5.0 [120/1] via 175.123.1.2, 00:00:08, Serial0/2
```

```
R    175.123.6.0 [120/1] via 175.123.3.1, 00:00:01, Serial0/0
```

task5 - set passive interface

- `R0`:

```
R0(config)#router rip
```

```
R0(config-router)#version 2
```

```
R0(config-router)#passive-interface FastEthernet 0/0
```

- `R1`:

```
R1(config)#router rip
```

```
R1(config-router)#version 2
```

```
R1(config-router)#passive-interface FastEthernet 0/0
```

- R2 :

```
R2(config)#router rip
R2(config-router)#version 2
R2(config-router)#passive-interface FastEthernet 0/0
```

task6 - check connection

net5 -> **net6** (**PC0** -> **PC1**)

- ping 175.123.5.1

```
Ping statistics for 175.123.5.1:
  Packets: Sent = 4, Received = 4, Lost = 0 (0% loss),
Approximate round trip times in milli-seconds:
  Minimum = 2ms, Maximum = 10ms, Average = 6ms
```

net5 -> **net4** (**PC0** -> **PC2**)

- ping 175.123.4.1

```
Ping statistics for 175.123.4.1:
  Packets: Sent = 4, Received = 4, Lost = 0 (0% loss),
Approximate round trip times in milli-seconds:
  Minimum = 2ms, Maximum = 11ms, Average = 5ms
```

net4 -> **net6** (**PC2** -> **PC1**)

- ping 175.123.6.1

```
Ping statistics for 175.123.6.1:
  Packets: Sent = 4, Received = 4, Lost = 0 (0% loss),
Approximate round trip times in milli-seconds:
  Minimum = 2ms, Maximum = 11ms, Average = 5ms
```


net6 -> net5 (PC2 -> PC0)

- ping 175.123.5.1

```
Ping statistics for 175.123.5.1:
```

```
    Packets: Sent = 4, Received = 4, Lost = 0 (0% loss),
```

```
Approximate round trip times in milli-seconds:
```

```
    Minimum = 2ms, Maximum = 8ms, Average = 4ms
```

and so on, all connections work fine!