

# lab6

- *Пажитных Иван Павлович*
- *3 курс, 1 группа, МСС*
- [github lab link](#)

## task1 - nets size and addressing

- net1 ~ 5000

name	value
ip/mask	173.213.192.0/19
ip	173.213.192.0
mask	255.255.224.0
net size	8190
min addr	173.213.192.1
max addr	173.213.223.254
broadcast	173.213.223.255

- net2 ~ 2000

name	value
ip/mask	173.213.224.0/21
ip	173.213.224.0
mask	255.255.248.0
net size	2046
min addr	173.213.224.1
max addr	173.213.231.254
broadcast	173.213.231.255

- net3 ~ 1950

name	value
ip/mask	173.213.232.0/21
ip	173.213.232.0
mask	255.255.248.0
net size	2046
min addr	173.213.232.1
max addr	173.213.239.254
broadcast	173.213.239.255

- net4 ~ 800

name	value
ip/mask	173.213.240.0/22
ip	173.213.240.0
mask	255.255.252.0
net size	1022
min addr	173.213.240.1
max addr	173.213.243.254
broadcast	173.213.243.255

- net5 ~ 2

name	value
ip/mask	173.213.244.0/30
ip	173.213.244.0
mask	255.255.255.252
net size	2
min addr	173.213.244.1
max addr	173.213.244.2

<b>broadcast name</b>	<b>value</b>
	173.213.244.3

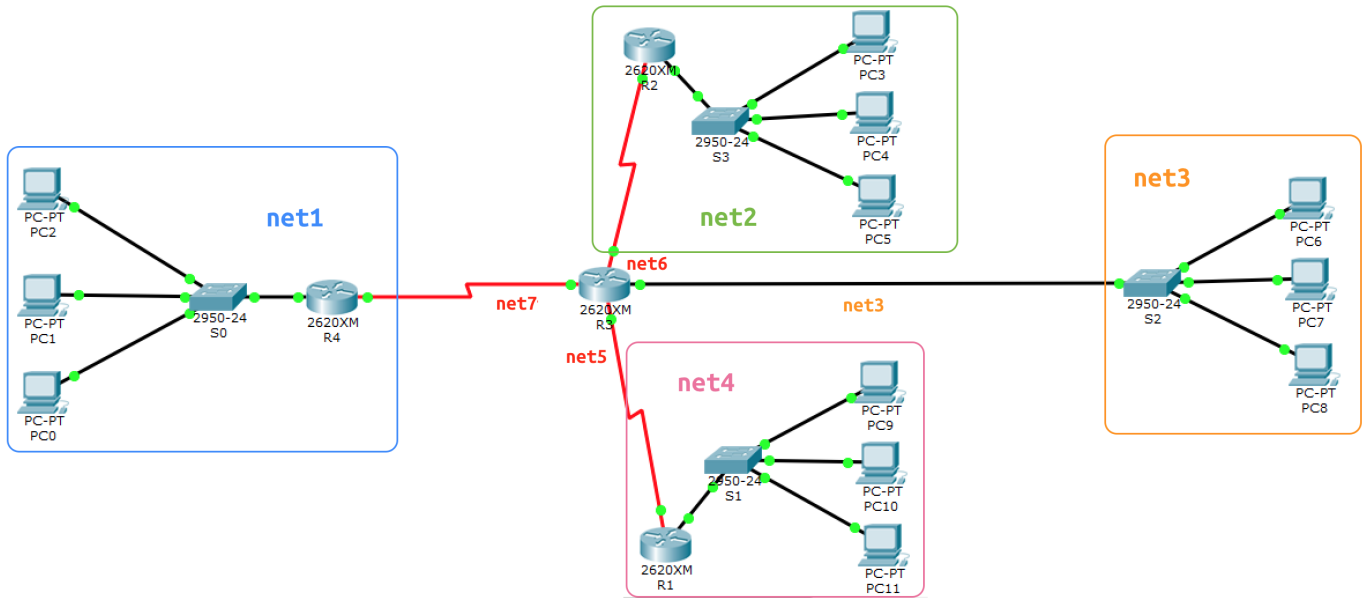
- net6 ~ 2

<b>name</b>	<b>value</b>
ip/mask	173.213.244.4/30
ip	173.213.244.4
mask	255.255.255.252
net size	2
min addr	173.213.244.5
max addr	173.213.244.6
broadcast	173.213.244.7

- net7 ~ 2

<b>name</b>	<b>value</b>
ip/mask	173.213.244.8/30
ip	173.213.244.8
mask	255.255.255.252
net size	2
min addr	173.213.244.9
max addr	173.213.244.10
broadcast	173.213.244.11

## task2 - build schema



## task3 - routers and switches names

```
Router>enable
Router#config t
Router(config)#hostname R1
```

```
Switch>enable
Switch#config t
Switch(config)#hostname S0
```

do same with **R2**, **R3**, **S1**, **S2**, **S3**

## task4 - ip configs

- **PC0** in **net1**

```
Link-local IPv6 Address.....: FE80::2D0:BCFF:FEC7:C1BC
IP Address.....: 173.213.192.1
Subnet Mask.....: 255.255.224.0
Default Gateway.....: 173.213.192.4
```

- **PC1** in **net1**

```
Link-local IPv6 Address.....: FE80::290:CFF:FEBA:3B20
IP Address.....: 173.213.192.2
Subnet Mask.....: 255.255.224.0
Default Gateway.....: 173.213.192.4
```

- PC2 in net1

```
Link-local IPv6 Address.....: FE80::260:70FF:FE70:A577
IP Address.....: 173.213.192.3
Subnet Mask.....: 255.255.224.0
Default Gateway.....: 173.213.192.4
```

- R4 in net1

```
R4(config)#interface FastEthernet0/0
R4(config-if)#ip address 173.213.192.4 255.255.224.0
R4(config-if)#no shutdown
R4(config-if)#exit
```

- PC3 in net2

```
Link-local IPv6 Address.....: FE80::210:11FF:FE8A:2C21
IP Address.....: 173.213.224.1
Subnet Mask.....: 255.255.248.0
Default Gateway.....: 173.213.224.4
```

- PC4 in net2

```
Link-local IPv6 Address.....: FE80::260:3EFF:FE48:C5E
IP Address.....: 173.213.224.2
Subnet Mask.....: 255.255.248.0
Default Gateway.....: 173.213.224.4
```

- PC5 in net2

```
Link-local IPv6 Address.....: FE80::260:47FF:FE31:C766
IP Address.....: 173.213.224.3
Subnet Mask.....: 255.255.248.0
Default Gateway.....: 173.213.224.4
```

- R2 in net2

```
R2(config)#interface FastEthernet0/0
R2(config-if)#ip address 173.213.224.4 255.255.248.0
R2(config-if)#no shutdown
R2(config-if)#exit
```

- PC6 in net3

```
Link-local IPv6 Address.....: FE80::201:96FF:FE12:8E6E
IP Address.....: 173.213.232.1
Subnet Mask.....: 255.255.248.0
Default Gateway.....: 173.213.232.4
```

- PC7 in net3

```
Link-local IPv6 Address.....: FE80::202:17FF:FEB4:861
IP Address.....: 173.213.232.2
Subnet Mask.....: 255.255.248.0
Default Gateway.....: 173.213.232.4
```

- PC8 in net3

```
Link-local IPv6 Address.....: FE80::2D0:BAFF:FE19:210E
IP Address.....: 173.213.232.3
Subnet Mask.....: 255.255.248.0
Default Gateway.....: 173.213.232.4
```

- R3 in net3

```
R3(config)#interface FastEthernet0/0
R3(config-if)#ip address 173.213.232.4 255.255.248.0
R3(config-if)#no shutdown
R3(config-if)#exit
```

- PC9 in net4

```
Link-local IPv6 Address.....: FE80::201:96FF:FE12:8E6E
IP Address.....: 173.213.240.1
Subnet Mask.....: 255.255.252.0
Default Gateway.....: 173.213.240.4
```

- PC10 in net4

```
Link-local IPv6 Address.....: FE80::203:E4FF:FE0B:6199
IP Address.....: 173.213.240.2
Subnet Mask.....: 255.255.252.0
Default Gateway.....: 173.213.240.4
```

- PC11 in net4

```
Link-local IPv6 Address.....: FE80::260:2FFF:FEB8:47D
IP Address.....: 173.213.240.3
Subnet Mask.....: 255.255.252.0
Default Gateway.....: 173.213.240.4
```

- R1 in net4

```
R1(config)#interface FastEthernet0/0
R1(config-if)#ip address 173.213.240.4 255.255.252.0
R1(config-if)#no shutdown
R1(config-if)#exit
```

- R1 in net5

```
R1(config)#interface Serial0/0
R1(config-if)#ip address 173.213.244.1 255.255.255.252
R1(config-if)#no shutdown
R1(config-if)#exit
```

- R3 in net5

```
R3(config)#interface Serial0/3
R3(config-if)#ip address 173.213.244.2 255.255.255.252
R3(config-if)#no shutdown
R3(config-if)#exit
```

- R2 in net6

```
R2(config)#interface Serial0/0
R2(config-if)#ip address 173.213.244.5 255.255.255.252
R2(config-if)#no shutdown
R2(config-if)#exit
```

- R3 in net6

```
R3(config)#interface Serial0/0
R3(config-if)#ip address 173.213.244.6 255.255.255.252
R3(config-if)#no shutdown
R3(config-if)#exit
```

- R4 in net7

```
R4(config)#interface Serial0/0
R4(config-if)#ip address 173.213.244.9 255.255.255.252
R4(config-if)#no shutdown
R4(config-if)#exit
```

- R3 in net7



```
R3(config)#interface Serial0/2
R3(config-if)#ip address 173.213.244.10 255.255.255.252
R3(config-if)#no shutdown
R3(config-if)#exit
```

## task5 - static routes

- set routes from R1 to net1, net2, net3 via R3 :

```
R1(config)#ip route 173.213.192.0 255.255.224.0 173.213.244.2
R1(config)#ip route 173.213.224.0 255.255.248.0 173.213.244.2
R1(config)#ip route 173.213.232.0 255.255.248.0 173.213.244.2
```

- show ip route for R1

```
173.213.0.0/16 is variably subnetted, 5 subnets, 4 masks
S       173.213.192.0/19 [1/0] via 173.213.244.2
S       173.213.224.0/21 [1/0] via 173.213.244.2
S       173.213.232.0/21 [1/0] via 173.213.244.2
C       173.213.240.0/22 is directly connected, FastEthernet0/0
C       173.213.244.0/30 is directly connected, Serial0/0
```

- set routes from R2 to net1, net3, net4 via R3 :

```
R2(config)#ip route 173.213.192.0 255.255.224.0 173.213.244.6
R2(config)#ip route 173.213.232.0 255.255.248.0 173.213.244.6
R2(config)#ip route 173.213.240.0 255.255.252.0 173.213.244.6
```

- show ip route for R2

173.213.0.0/16 is variably subnetted, 5 subnets, 4 masks

S 173.213.192.0/19 [1/0] via 173.213.244.6

C 173.213.224.0/21 is directly connected, FastEthernet0/0

S 173.213.232.0/21 [1/0] via 173.213.244.6

S 173.213.240.0/22 [1/0] via 173.213.244.6

C 173.213.244.4/30 is directly connected, Serial0/0

- set routes from R4 to net2, net3, net4 via R3:

```
R4(config)#ip route 173.213.224.0 255.255.248.0 173.213.244.10
```

```
R4(config)#ip route 173.213.232.0 255.255.248.0 173.213.244.10
```

```
R4(config)#ip route 173.213.240.0 255.255.252.0 173.213.244.10
```

- show ip route for R2

173.213.0.0/16 is variably subnetted, 5 subnets, 4 masks

C 173.213.192.0/19 is directly connected, FastEthernet0/0

S 173.213.224.0/21 [1/0] via 173.213.244.10

S 173.213.232.0/21 [1/0] via 173.213.244.10

S 173.213.240.0/22 [1/0] via 173.213.244.10

C 173.213.244.8/30 is directly connected, Serial0/0

- set routes from R3 to net1, net2, net4 via R4, R2 and R1 respectively:

```
R3(config)#ip route 173.213.192.0 255.255.224.0 173.213.244.9
```

```
R3(config)#ip route 173.213.224.0 255.255.248.0 173.213.244.5
```

```
R3(config)#ip route 173.213.240.0 255.255.252.0 173.213.244.1
```

- show ip route for R3

```
173.213.0.0/16 is variably subnetted, 7 subnets, 4 masks
```

```
S      173.213.192.0/19 [1/0] via 173.213.244.9
```

```
S      173.213.224.0/21 [1/0] via 173.213.244.5
```

```
C      173.213.232.0/21 is directly connected, FastEthernet0/0
```

```
S      173.213.240.0/22 [1/0] via 173.213.244.1
```

```
C      173.213.244.0/30 is directly connected, Serial0/3
```

```
C      173.213.244.4/30 is directly connected, Serial0/0
```

```
C      173.213.244.8/30 is directly connected, Serial0/2
```

## task6 - check connection

**net1** -> **net2** ( **PC0** -> **PC3** )

- `ping 173.213.224.1`

```
Ping statistics for 173.213.224.1:
```

```
  Packets: Sent = 4, Received = 4, Lost = 0 (0% loss),
```

```
Approximate round trip times in milli-seconds:
```

```
  Minimum = 2ms, Maximum = 10ms, Average = 6ms
```

**net1** -> **net3** ( **PC0** -> **PC7** )

- `ping 173.213.232.2`

```
Ping statistics for 173.213.232.2:
```

```
  Packets: Sent = 4, Received = 4, Lost = 0 (0% loss),
```

```
Approximate round trip times in milli-seconds:
```

```
  Minimum = 1ms, Maximum = 2ms, Average = 1ms
```

**net1** -> **net4** ( **PC1** -> **PC11** )

- `ping 173.213.240.3`

```
Ping statistics for 173.213.240.3:
```

```
Packets: Sent = 4, Received = 4, Lost = 0 (0% loss),
```

```
Approximate round trip times in milli-seconds:
```

```
Minimum = 2ms, Maximum = 7ms, Average = 3ms
```

**net4** -> **net2** ( **PC10** -> **PC5** )

- `ping 173.213.224.3`

```
Ping statistics for 173.213.224.3:
```

```
Packets: Sent = 4, Received = 4, Lost = 0 (0% loss),
```

```
Approximate round trip times in milli-seconds:
```

```
Minimum = 2ms, Maximum = 10ms, Average = 7ms
```

**net3** -> **net1** ( **PC6** -> **PC0** )

- `ping 173.213.192.1`

```
Ping statistics for 173.213.192.1:
```

```
Packets: Sent = 4, Received = 4, Lost = 0 (0% loss),
```

```
Approximate round trip times in milli-seconds:
```

```
Minimum = 1ms, Maximum = 9ms, Average = 3ms
```

and so on, all connections work fine!