

МИНИСТЕРСТВО ОБРАЗОВАНИЯ РЕСПУБЛИКИ БЕЛАРУСЬ
БЕЛОРУССКИЙ ГОСУДАРСТВЕННЫЙ УНИВЕРСИТЕТ
Факультет прикладной математики и информатики
Кафедра МСС

Пажитных Иван Павлович

Знакомство с пакетом Packet Tracer.

**Создание компьютерной сети с
использованием Packet Tracer**

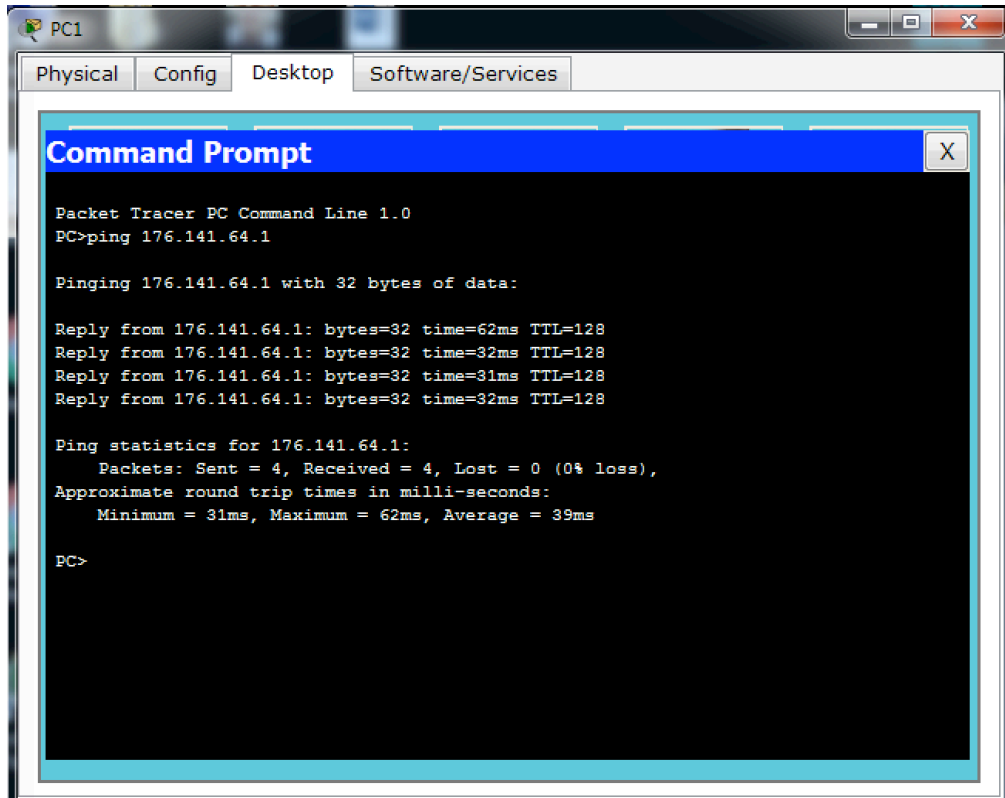
Отчет по лабораторной работе №2
Вариант 18
(«Компьютерные сети»)
студента 3 курса 1 группы

Преподаватель
Рафиенко Е.Д.

Минск 2017

1. Задание

18	176.141.64.1	176.141.64.2	255.255.255.0	176.141.64.3
----	--------------	--------------	---------------	--------------



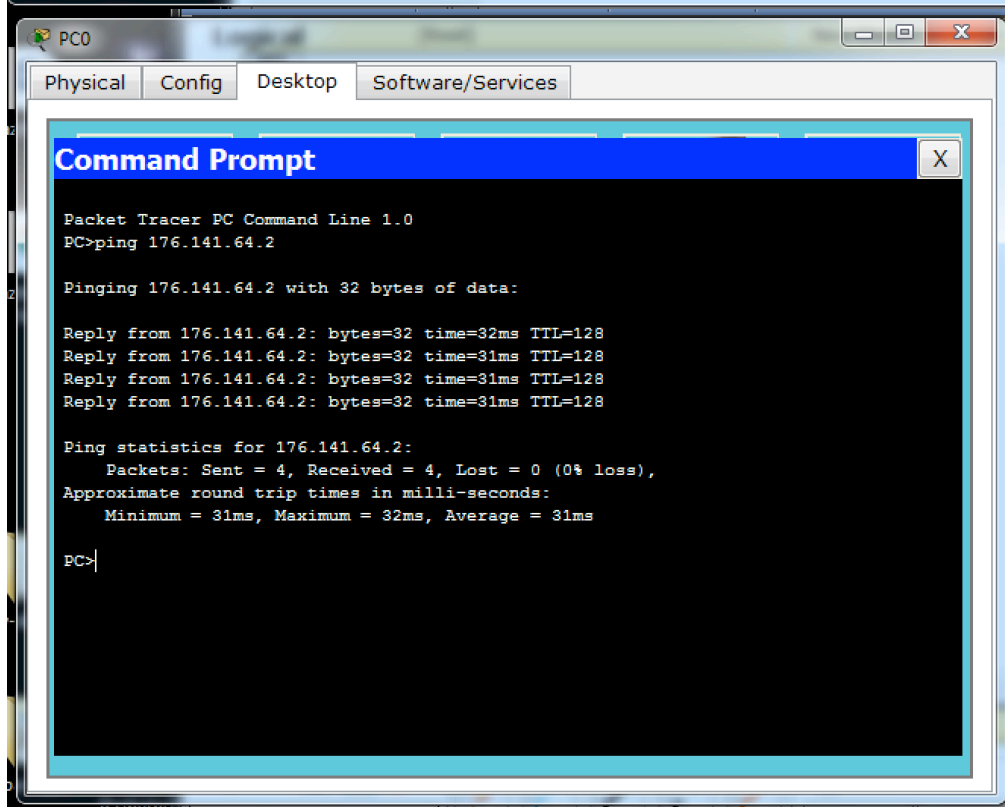
```
PC1
Physical Config Desktop Software/Services
Command Prompt
Packet Tracer PC Command Line 1.0
PC>ping 176.141.64.1

Pinging 176.141.64.1 with 32 bytes of data:

Reply from 176.141.64.1: bytes=32 time=62ms TTL=128
Reply from 176.141.64.1: bytes=32 time=32ms TTL=128
Reply from 176.141.64.1: bytes=32 time=31ms TTL=128
Reply from 176.141.64.1: bytes=32 time=32ms TTL=128

Ping statistics for 176.141.64.1:
    Packets: Sent = 4, Received = 4, Lost = 0 (0% loss),
    Approximate round trip times in milli-seconds:
        Minimum = 31ms, Maximum = 62ms, Average = 39ms

PC>
```



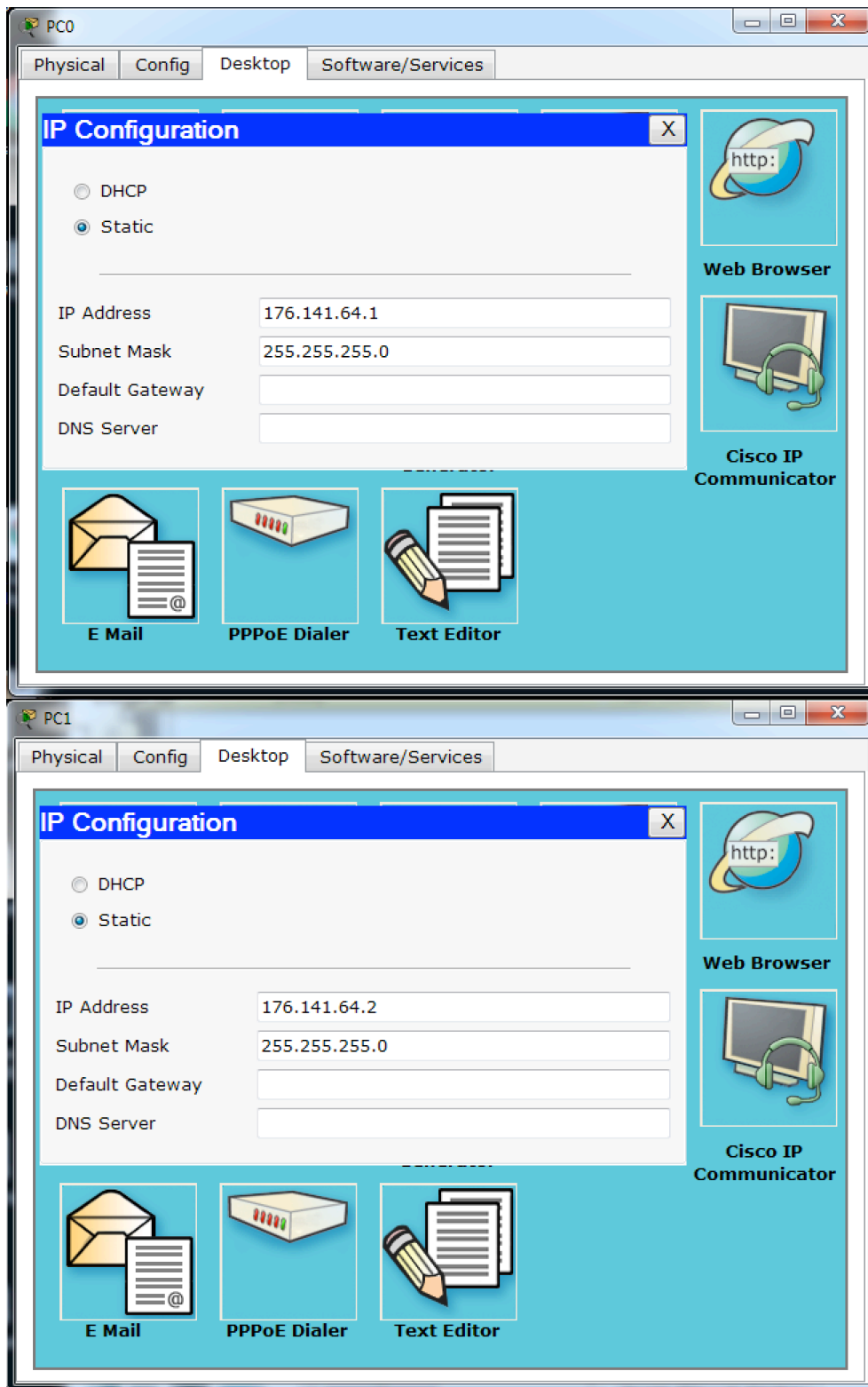
```
PC0
Physical Config Desktop Software/Services
Command Prompt
Packet Tracer PC Command Line 1.0
PC>ping 176.141.64.2

Pinging 176.141.64.2 with 32 bytes of data:

Reply from 176.141.64.2: bytes=32 time=32ms TTL=128
Reply from 176.141.64.2: bytes=32 time=31ms TTL=128
Reply from 176.141.64.2: bytes=32 time=31ms TTL=128
Reply from 176.141.64.2: bytes=32 time=31ms TTL=128

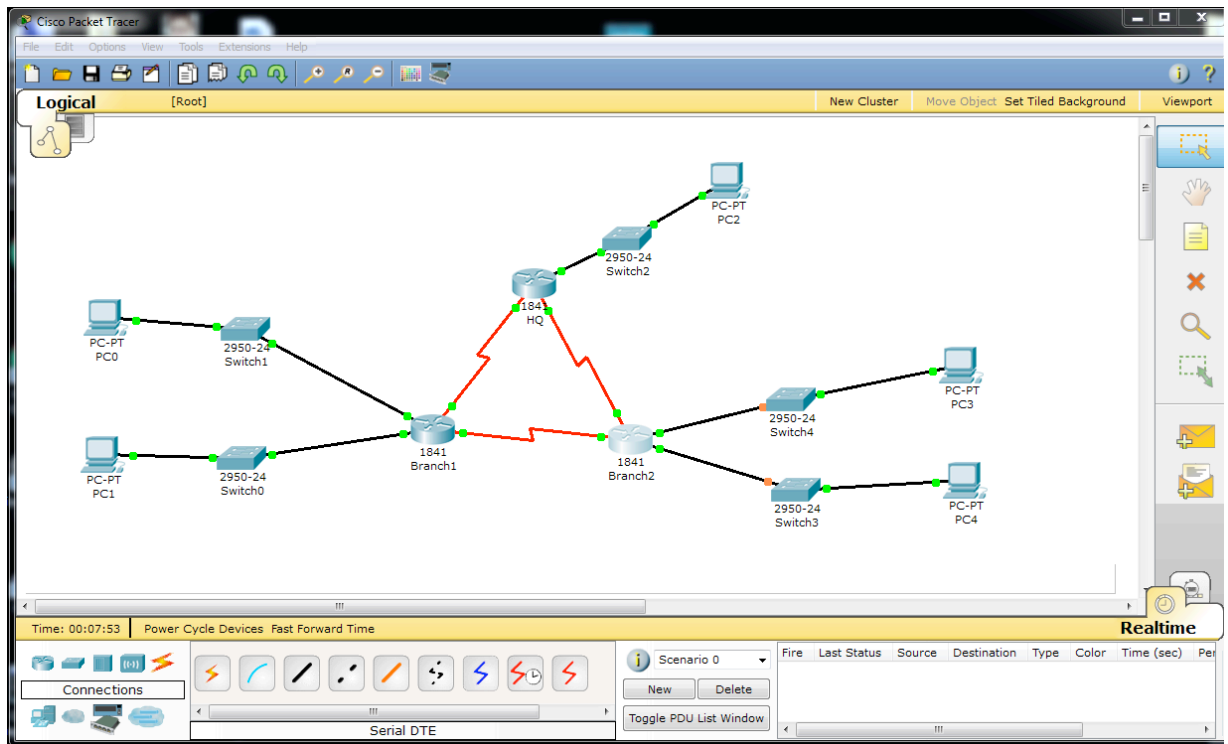
Ping statistics for 176.141.64.2:
    Packets: Sent = 4, Received = 4, Lost = 0 (0% loss),
    Approximate round trip times in milli-seconds:
        Minimum = 31ms, Maximum = 32ms, Average = 31ms

PC>
```

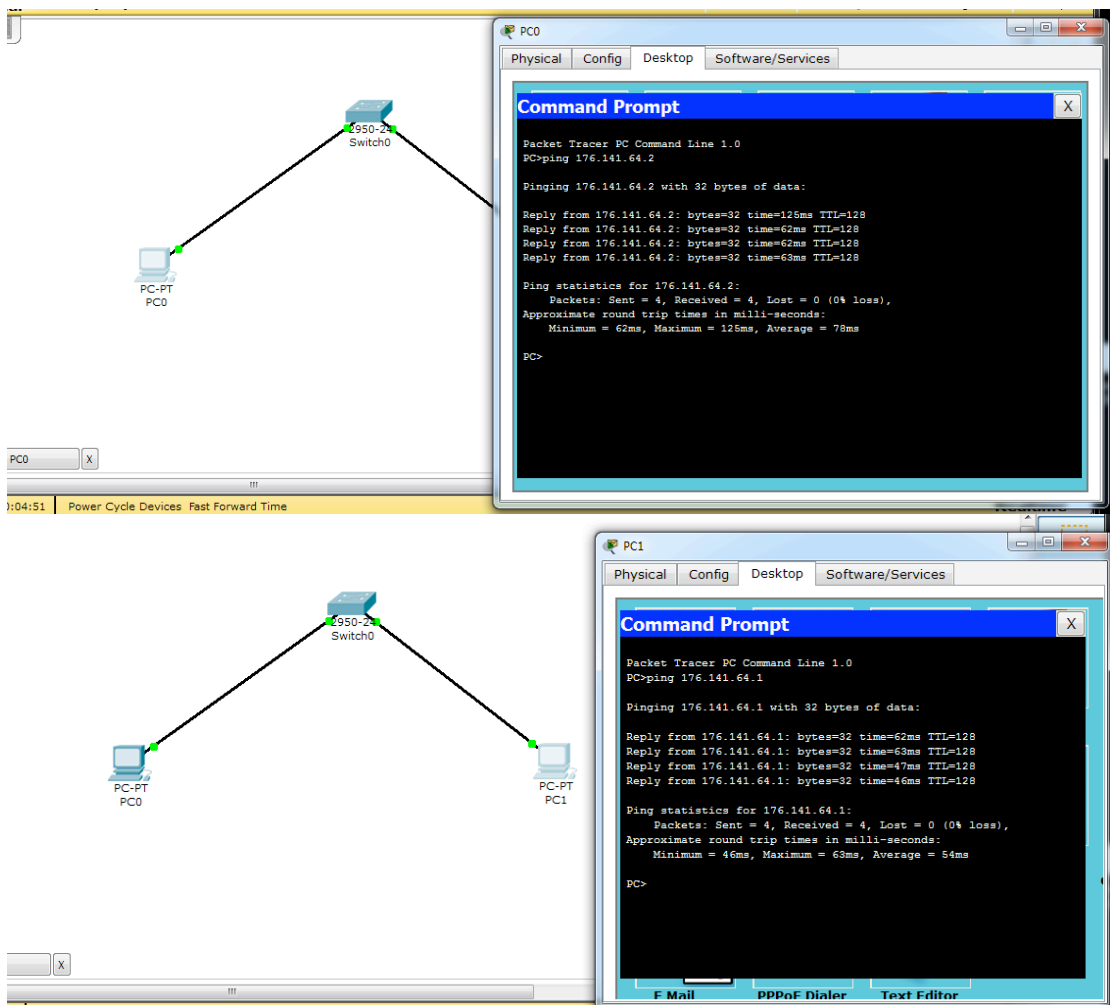


- PC0 mac: **0001.C70A.52E1**
- PC1 mac: **0005.5EB2.0950**

2. Задание 2



3. Задание 3



- **Pc-0:**

```
Physical Address.....: 0004.9A74.7E40  
IP Address.....: 176.141.64.1  
Subnet Mask.....: 255.255.255.0  
Default Gateway.....: 176.141.64.3  
DNS Servers.....: 0.0.0.0
```

- **Pc-1:**

```
Physical Address.....: 0003.E472.9B67  
IP Address.....: 176.141.64.2  
Subnet Mask.....: 255.255.255.0  
Default Gateway.....: 176.141.64.3  
DNS Servers.....: 0.0.0.0
```

- **MySwitch:**

```
1 0003.e472.9b67 DYNAMIC Fa0/2  
1 0004.9a74.7e40 DYNAMIC Fa0/1
```

- мас адреса совпадают