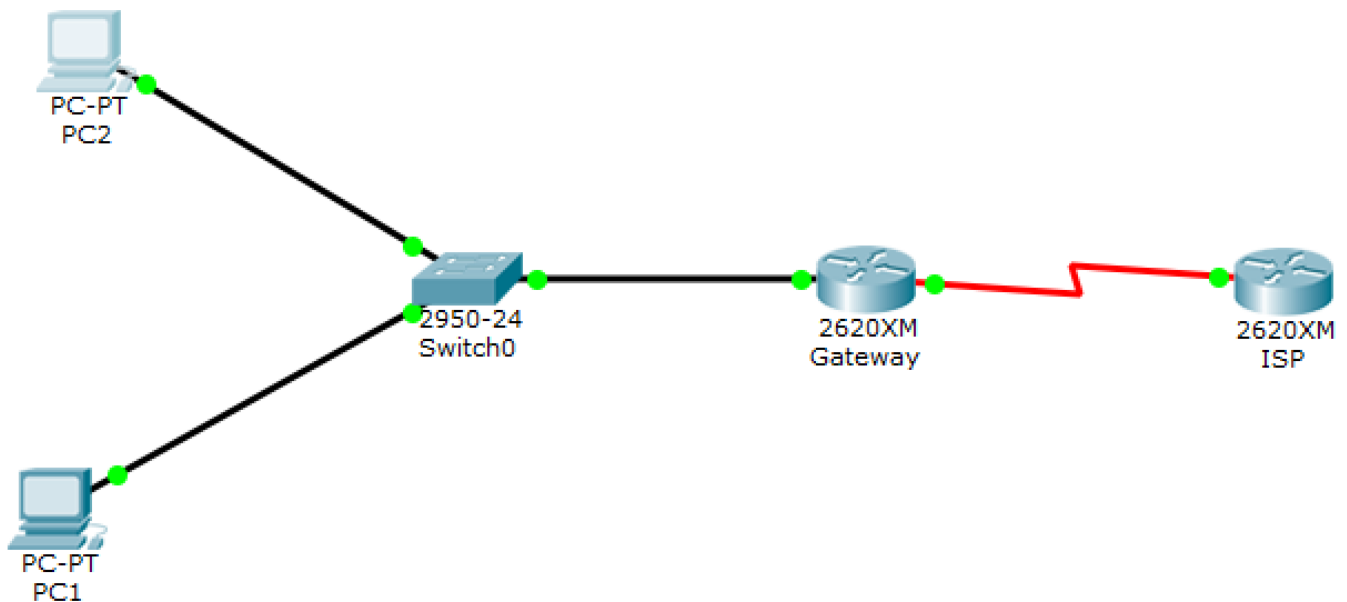


lab11

- Пажитных Иван Павлович
- 3 курс, 1 группа, MCC
- [github lab link](#)

task0 - schema



task1 - ip configs

- PC1 :

```
Link-local IPv6 Address.....: FE80::260:2FFF:FE42:BC29
IP Address.....: 10.162.140.3
Subnet Mask.....: 255.255.255.0
Default Gateway.....: 10.162.140.1
```

- PC2 :

```
Link-local IPv6 Address.....: FE80::204:9AFF:FEAB:C88
IP Address.....: 10.162.140.2
Subnet Mask.....: 255.255.255.0
Default Gateway.....: 10.162.140.1
```

- Gateway :

```
Gateway#config tGateway(config)#interface fastEthernet0/0
Gateway(config)#interface fastEthernet0/0
Gateway(config-if)#ip address 10.162.140.1 255.255.255.0
Gateway(config-if)#exit
```

```
Gateway(config)#interface serial0/1
Gateway(config-if)#ip address 176.141.0.1 255.255.255.252
Gateway(config-if)#exit
```

- **ISP :**

```
ISP(config)#interface serial0/1
ISP(config-if)#ip address 176.141.0.2 255.255.255.252
```

```
ISP(config)#interface loopback1
ISP(config-if)#ip address 172.16.1.18 255.255.255.255
```

task2 - connection check & QA

PC1 -> Gateway :

- `ping 10.162.140.1`

```
Reply from 10.162.140.1: bytes=32 time=2ms TTL=255
Reply from 10.162.140.1: bytes=32 time=0ms TTL=255
Reply from 10.162.140.1: bytes=32 time=0ms TTL=255
Reply from 10.162.140.1: bytes=32 time=0ms TTL=255
Ping statistics for 10.162.140.1:
    Packets: Sent = 4, Received = 4, Lost = 0 (0% loss),
    Approximate round trip times in milli-seconds:
        Minimum = 0ms, Maximum = 2ms, Average = 0ms
```

PC2 -> Gateway :

- `ping 10.162.140.1`

```
Reply from 10.162.140.1: bytes=32 time=1ms TTL=255
Reply from 10.162.140.1: bytes=32 time=0ms TTL=255
Reply from 10.162.140.1: bytes=32 time=1ms TTL=255
Reply from 10.162.140.1: bytes=32 time=0ms TTL=255
Ping statistics for 10.162.140.1:
    Packets: Sent = 4, Received = 4, Lost = 0 (0% loss),
```

Approximate round trip times in milli-seconds:
Minimum = 0ms, Maximum = 1ms, Average = 0ms

Если бы вы попытались отправить эхо-запросы на *IP*-адрес маршрутизатора `ISP`, был бы этот эхо-запрос успешным? Поясните свой ответ.

Ответ: результат был бы не успешным, т.к. не настроена маршрутизация на `Gateway`

task3 - routes config

Gateway :

- default gateway:

```
Gateway(config)#ip route 0.0.0.0 0.0.0.0 176.141.0.2
```

- `show ip route` :

```
Gateway of last resort is 176.141.0.2 to network 0.0.0.0
  10.0.0.0/24 is subnetted, 1 subnets
C       10.162.140.0 is directly connected, FastEthernet0/0
  176.141.0.0/30 is subnetted, 1 subnets
C       176.141.0.0 is directly connected, Serial0/1
S*    0.0.0.0/0 [1/0] via 176.141.0.2
```

PC1 -> ISP

- `ping 176.141.0.2` :

```
Request timed out.
Request timed out.
Request timed out.
Request timed out.
Ping statistics for 176.141.0.2:
    Packets: Sent = 4, Received = 0, Lost = 4 (100% loss),
```

ISP

- static route:

```
ISP(config)#ip route 10.162.140.0 255.255.255.0 176.141.0.1
```

PC1 -> ISP

- ping 176.141.0.2 :

```
Reply from 176.141.0.2: bytes=32 time=5ms TTL=255
Reply from 176.141.0.2: bytes=32 time=7ms TTL=255
Reply from 176.141.0.2: bytes=32 time=4ms TTL=255
Reply from 176.141.0.2: bytes=32 time=6ms TTL=255
Ping statistics for 176.141.0.2:
    Packets: Sent = 4, Received = 4, Lost = 0 (0% loss),
Approximate round trip times in milli-seconds:
    Minimum = 5ms, Maximum = 7ms, Average = 6ms
```

task4 - NAT config

- Gateway :

```
Gateway(config)#ip nat pool public_access 176.141.0.1 176.141.0.1 netmask 255.255.255.252
Gateway(config)#access-list 1 permit 10.162.140.0 0.0.0.255
Gateway(config)#ip nat inside source list 1 pool public_access overload
Gateway(config)#interface fastethernet 0/0
Gateway(config-if)#ip nat inside
Gateway(config-if)#interface serial 0/0
Gateway(config-if)#ip nat outside
Gateway(config-if)#exit
```

task5 - generate traffic

PC1 -> loopback :

- ping 172.16.1.18 :

```
Reply from 172.16.1.18: bytes=32 time=94ms TTL=254
Reply from 172.16.1.18: bytes=32 time=94ms TTL=254
Reply from 172.16.1.18: bytes=32 time=80ms TTL=254
Reply from 172.16.1.18: bytes=32 time=94ms TTL=254

Ping statistics for 172.16.1.18:
    Packets: Sent = 4, Received = 4, Lost = 0 (0% loss),
Approximate round trip times in milli-seconds:
    Minimum = 80ms, Maximum = 94ms, Average = 90ms
```

PC2 -> loopback :

- ping 172.16.1.18 :

```
Reply from 172.16.1.18: bytes=32 time=93ms TTL=254
Reply from 172.16.1.18: bytes=32 time=93ms TTL=254
Reply from 172.16.1.18: bytes=32 time=94ms TTL=254
Reply from 172.16.1.18: bytes=32 time=93ms TTL=254
```

Ping statistics for 172.16.1.18:

```
  Packets: Sent = 4, Received = 4, Lost = 0 (0% loss),
Approximate round trip times in milli-seconds:
  Minimum = 93ms, Maximum = 94ms, Average = 93ms
```

task6 - check NAT

Gateway

- `show ip nat statistics`

```
Total translations: 0 (0 static, 0 dynamic, 0 extended)
Outside Interfaces: Serial0/0
Inside Interfaces: FastEthernet0/0
Hits: 8 Misses: 8
Expired translations: 8
Dynamic mappings:
-- Inside Source
access-list 1 pool public_access refCount 0
  pool public_access: netmask 255.255.255.252
    start 176.141.0.1 end 176.141.0.1
    type generic, total addresses 1 , allocated 0 (0%), misses 0
```